

# Punctuation

I tell.  
I am a  
full stop.

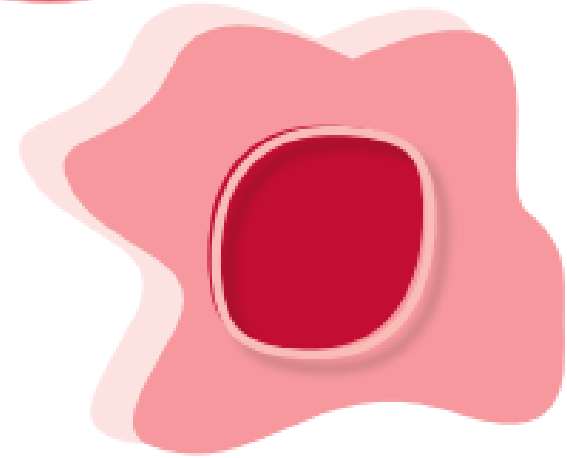


I yell.  
I am an  
exclamation mark.

I ask.  
I am a  
question mark.



## Full Stop



Full stops are used to end a sentence.  
My name is Ahmed.

Full stops are used for abbreviations.  
e.g.

Full stops are used when an abbreviation does not  
include the last letter of the full word.  
Sun. - Sunday

Full stops are used in internet addresses.  
[www.twinkl.com](http://www.twinkl.com)

# Question Marks

Why?  
Who are you?  
What is inside?  
Which door?  
What time is it?

Question marks are used when a direct question is asked.

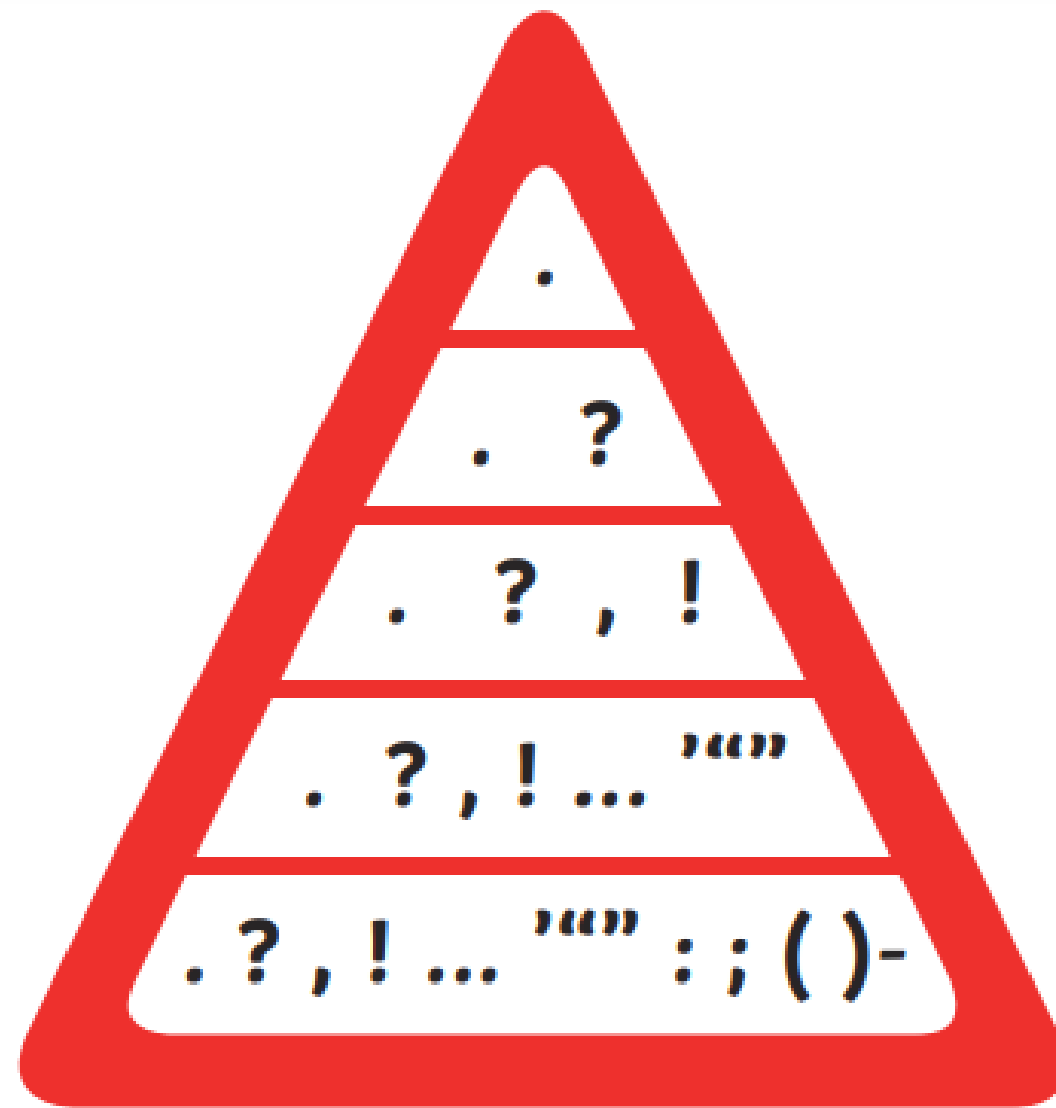
# Exclamation Marks



Exclamation marks are used to indicate strong feelings or a raised voice in speech:

"Go away!" she shouted at him.  
"What a fantastic house you have!" he exclaimed.  
"Good heavens!" he said, "Is that true?"  
"Help!"  
"Be quiet!"

Avoid using exclamation marks too much or they will lose their impact.



## Have You Remembered

capital letters and finger spaces?

0:26 ✓ 465

**Punctuation that separates elements within a sentence and indicates emphasis, interruption or abrupt change of thought**

<b>A</b> dash -	<b>B</b> elipses ...	<b>C</b> exclamation mark !	<b>D</b> colon :
--------------------	-------------------------	--------------------------------	---------------------

**x2 Score**   **50:50**   **Extra Time**

4 of 10

